

For Research Use Only, Not for use in diagnostic procedures

Human S100A10

Human, recombinant protein expressed in *E. coli*.

Cat# CY-R2260

Amount: 100 µg (1.0 µg/µl)
Lot:**Introduction:**

S100A10, a member of the S100 family of Ca²⁺-binding proteins, is a dimeric protein composed of two 11-kDa subunits. The protein is cytosolic when present as a dimer. Typically, S100A10 is found in most cells bound to annexin A2 as the heterotetrameric (S100A10)₂-(annexin A2)₂ complex, AIIIt, in a calcium-independent manner. The formation of AIIIt results in the translocation of S100A10 to the plasma membrane. S100A10 has been shown to regulate plasma membrane ion channels as well as cytosolic phospholipase A2. In addition to an intracellular distribution, it has also been established that the heterotetrameric form of S100A10 is present on the extracellular surface of many cells. Extracellularly, the S100A10 subunit functions as a plasminogen receptor. The penultimate and ultimate carboxyl-terminal lysines of this subunit bind tPA and plasminogen and regulate the stimulation of tPA-dependent plasminogen activation.

Product Description:

Full length of human S100A10, containing an N-terminal GST tag, expressed in *E. coli*. and purified by GSH agarose chromatography.

Gene Information:

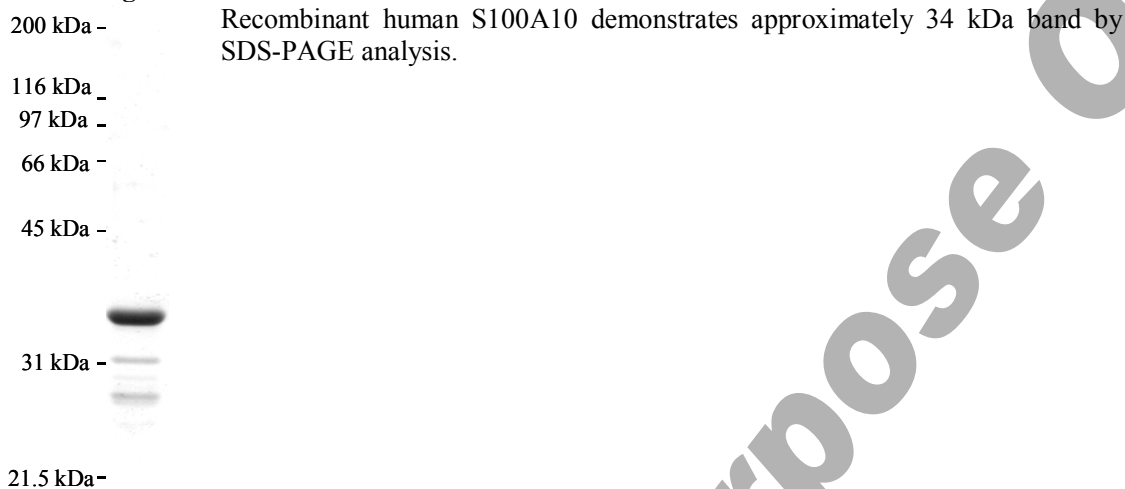
The gene accession number is NM_002966.

Gene Aliases:

Calpactin light chain, CAL12, CLP11, p11, p10, 42C

Formulation:

Recombinant human S100A10 is supplied frozen in phosphate buffered saline (PBS) containing 50 % glycerol.

For Research Use Only, Not for use in diagnostic procedures**Molecular Weight:** 34 kDa**Storage:**

Store product at -70°C. For optimal storage, aliquot target into smaller quantities after centrifugation and store at recommended temperature. For most favorable performance, AVOID REPEATED HANDLING AND MULTIPLE FREEZE/THAW CYCLES.

Stability:

Unopened vial at -70 °C, for 1 year after delivery.

References:

1. Donato, R. (2001) *Int. J. Biochem. Cell Biol.* 33, 637–668
2. Gerke, V., and Moss, S. E. (2002) *Physiol. Rev.* 82, 331–371
3. Donato, R., and Russo-Marie, F. (1999) *Cell Calcium* 26, 85–89
4. Seaton, B. A., and Dedman, J. R. (1998) *Biometals* 11, 399–404
5. Girard, C., Tinel, N., Terrenoire, C., Romey, G., Lazdunski, M., and Borsotto, M. (2002) *EMBO J.* 21, 4439–4448
6. Okuse, K., Malik-Hall, M., Baker, M. D., Poon, W. Y., Kong, H., Chao, M. V., and Wood, J. N. (2002) *Nature* 417, 653–656

Related Products

- * CircuLex S100A13 ELISA Kit: Cat# CY-8057
- * CircuLex S100A12 ELISA Kit: Cat# CY-8058
- * CircuLex S100P ELISA Kit: Cat# CY-8060
- * CircuLex S100A8-MRP8 ELISA Kit: Cat# CY-8061
- * CircuLex S100A9-MRP14 ELISA Kit: Cat# CY-8062
- * CircuLex S100A11 ELISA Kit: Cat# CY-8063
- * CircuLex S100A14 ELISA Kit: Cat# CY-8064
- * CircuLex S100A7/Psoriasis ELISA Kit: Cat# CY-8073
- * CircuLex S100A4 ELISA Kit Ver.2: Cat# CY-8086

- * Anti-Human S100A3 (Clone YK-3E3): Cat# CY-M1039
- * Anti-Human S100A4 (p9Ka): Cat# CY-P1026

For Research Use Only, Not for use in diagnostic procedures

- * **Anti-Human S100P: Cat# CY-P1028**
- * **Anti-Human S100A10: Cat# CY-P1033**
- * **Anti-Human S100A16: Cat# CY-P1034**
- * **Anti-Human S100A3: Cat# CY-P1039**
- * **Anti-Human S100A2: Cat# CY-P1040**

- * **Human S100B: Cat# CY-R2250**
- * **Human S100A1: Cat# CY-R2251**
- * **Human S100A2: Cat# CY-R2252**
- * **Human S100A3: Cat# CY-R2253**
- * **Human S100A4: Cat# CY-R2254**
- * **Human S100A5: Cat# CY-R2255**
- * **Human S100A6: Cat# CY-R2256**
- * **Human S100A7: Cat# CY-R2257**
- * **Human S100A8: Cat# CY-R2258**
- * **Human S100A9: Cat# CY-R2259-G**
- * **Human S100A9: Cat# CY-R2259-H**
- * **Human S100A10: Cat# CY-R2260**
- * **Human S100A12: Cat# CY-R2262-G**
- * **Human S100A12: Cat# CY-R2262-H**
- * **Human S100A13: Cat# CY-R2263**
- * **Human S100A14: Cat# CY-R2264**
- * **Human S100A16: Cat# CY-R2266**
- * **Human S100P: Cat# CY-R2267**
- * **Human S100A11: Cat# CY-R2269**

- * **Human S100A1 Low Endotoxin: Cat# CY-R2451**
- * **Human S100A3 Low Endotoxin: Cat# CY-R2453**
- * **Human S100A4 Low Endotoxin: Cat# CY-R2454**
- * **Human S100A7 Low Endotoxin: Cat# CY-R2457**
- * **Human S100A8 Low Endotoxin: Cat# CY-R2458**
- * **Human S100A9 Low Endotoxin: Cat# CY-R2459-G**
- * **Human S100A11 Low Endotoxin: Cat# CY-R2461**
- * **Human S100A12 Low Endotoxin: Cat# CY-R2462-G**
- * **Human S100A14 Low Endotoxin: Cat# CY-R2464**
- * **Human S100P Low Endotoxin: Cat# CY-R2467**

PRODUCED BY

CycLex Co., Ltd.
1063-103 Terasawaoka
Ina, Nagano 396-0002
Japan
Fax: +81-265-76-7618
e-mail: info@cyclex.co.jp
URL: <http://www.cyclex.co.jp>

CycLex/CircuLex products are supplied for research use only. CycLex/CircuLex products and components thereof may not be resold, modified for resale, or used to manufacture commercial products without prior written approval from CycLex Co., Ltd.. To inquire about licensing for such commercial use, please contact us via email.